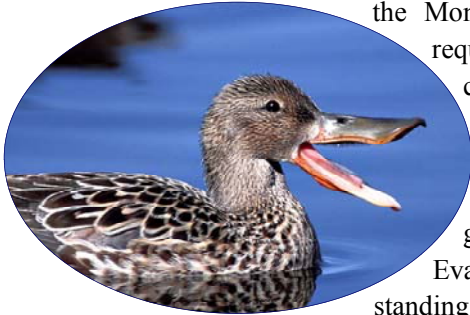


Implementation, Evaluation and Evolution

Implementation



The Montana Cancer Control Coalition (MTCCC) is committed to implementing the Montana Comprehensive Cancer Control (CCC) Plan. This will require organizations and members to work together on cancer control activities. The MTCCC has restructured for implementation as indicated in the organizational chart. The responsibilities and roles of the Steering Committee and members have been defined. The Steering Committee is the governance and decision-making body. Communication, Evaluation, and Evolution will continue as standing committees. Ad hoc committees will form and dissolve as needed.

The Steering Committee will direct implementation activities and establish timelines. It will continue to recruit, maintain memberships, and build partnerships, as well as plan distribution. The Steering Committee will also continue to develop leadership skills among volunteers, guide data and communication priorities, identify resources, and coordinate cancer control activities.

The Communication Committee will develop short- and long-range internal, external, and media communication plans.

The Evaluation Committee ensured that CCC Plan objectives are measurable, and include identified data sources, baseline data, and target outcomes whenever possible. This committee will develop the evaluation framework, the evaluation plan, and guide, monitor, and assess the evaluation of the Comprehensive Cancer Control Program, the MTCCC, CCC Plan implementation activities, and outcomes.

The Evolution Committee will prioritize auxiliary and newly proposed strategies using documented criteria, and consider such factors as evaluation results, new opportunities, science, and trends, and use them to make recommendations for change to the Steering Committee.

MTCCC members have confirmed their commitment to CCC Plan implementation by registering for implementation teams, support expertise workgroups, and standing committees. Implementation teams are organized around the CCC Plan sections of Prevention,

Early Detection, Treatment and Research, and Quality of Life and Survivorship. Resources are limited.

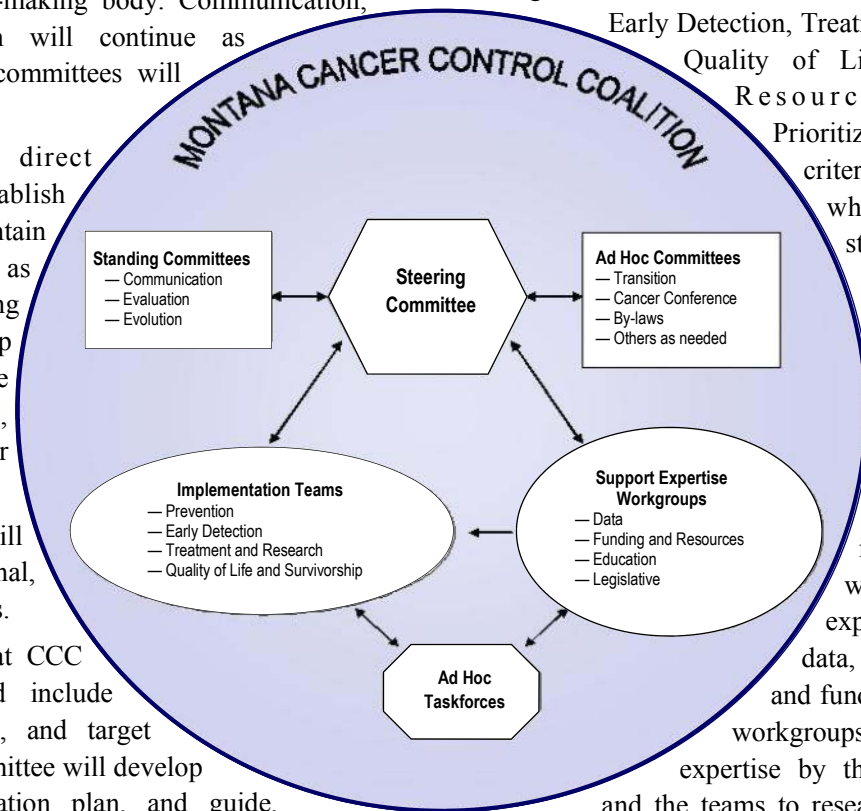
Prioritization using established criteria will set the order in which objectives and strategies are addressed.

The implementation teams will work together to finalize and implement prioritized strategies.

The coalition identified cross-cutting issues and defined workgroups to provide expertise in the arenas of data, education, legislation, and funding and resources. The

workgroups are utilized for their expertise by the Steering Committee

and the teams to research and identify tools, projects, best practices, and resources in their areas of expertise. As implementation progresses, evaluation and evolution will be key to ensuring sustainability.





Evaluation

Evaluation will consist of four parts:

1. Comprehensive Cancer Control Program
2. Montana Cancer Control Coalition
3. CCC Plan implementation process and environment
4. CCC Plan short, intermediate and long-term outcomes

The Evaluation Committee will establish an overall evaluation protocol, as well as develop and oversee implementation of an evaluation plan. It will determine the needs, questions, methods, measures of effectiveness, and framework for evaluating the CCC Program, the MTCCC, CCC Plan cancer control activities, and outcomes. The Evaluation Committee will also identify stakeholders who are already implementing CCC Plan activities.

The Evaluation Committee will also assess progress toward stated objectives and outcomes, and toward achieving short- and long-range goals. They will undertake such activities as:

- periodically assessing progress in meeting program goals.
- evaluating the coalition for networking, member satisfaction, technical assistance, and educational needs.
- evaluating prioritization and implementation processes and the environment within which implementation occurs.
- creating and overseeing evaluation plans for cancer control activities, and the process and progress toward outcomes.

The committee will analyze utilization and availability of resources, and internal and external infrastructures.

An annual progress report will be presented at a cancer control conference. Evaluation results will be used to improve the CCC Program, the MTCCC structure and function, the implementation process, change or develop cancer control activities, and improve progress toward desired outcomes.

Program evaluation is a systematic way to learn from past experience, and improve performance and outcomes.

Evolution

The Comprehensive Cancer Control Plan is a living document, an essential starting point, and a guide for addressing cancer in Montana. The plan will change and evolve with time, information, new opportunities, and changing needs. The Evolution Committee will oversee recommendations for change made to the Steering Committee. The critical steps of evolution include:

- continuing to recruit and maintain a broad-based membership.
- creating recommendations based on assessments and using them to implement changes to the program, the coalition, and the plan.
- prioritizing ideas, suggestions, new and ongoing strategies based on established criteria, protocols, and evaluation results. Unprioritized issues and ideas from the planning process are available at www.cancer.mt.gov under the “Auxiliary Strategy List.” This will be periodically updated and prioritized by the Evolution Committee.
- adding, changing, or disbanding ad hoc committees and taskforces as projects are completed and priorities emerge.
- sustaining an implementation process that continues to evolve in response to evaluation results, the environment, data, resources, new opportunities, new evidence and science, healthcare trends, opportunities, national programs, and the need for cancer control in Montana.
- continuing a comprehensive, multifaceted approach to decreasing the burden of cancer in Montana.
- ensuring accountability throughout the comprehensive cancer control process through evaluation, response, and modification.
- maintaining fidelity to the vision: *A comprehensive, statewide, evidence-based approach to reduce the burden of cancer in Montana, motivated by compassion... an investment in the future.*

Organizations and individuals interested in joining the MTCCC to implement this plan should complete and return the member information form on page 65 of this document or online at www.cancer.mt.gov.